

Road Safety

Special machines

HD 45°

Tracked pile driver

Thanks to its raised frame and the ability to drive the support poles at 45°, it is the ideal machine for the strengthening activities on already installed barriers. It is also possible to equip it with a rotor for anchoring screw poles. Faithful to our identity, we have also optimized the project by equipping the machine with a hammer able to perform the ordinary activity of vertical driving.

Safety and ergonomics have always informed Orteco's projects: all operations can be carried out through a radio control, so as to allow operators to carry out their activities at a safe distance, with undoubted benefits of hearing protection and general safety on site.



Download the data sheet and watch our videos

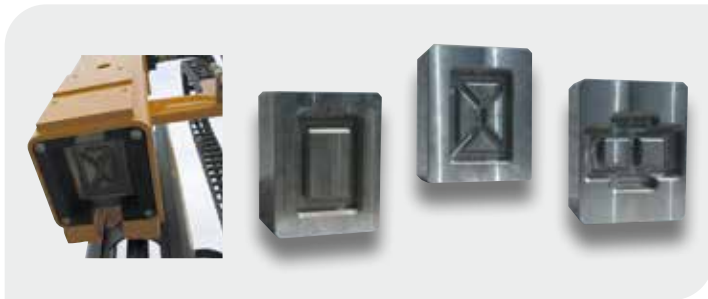
<https://rb.gy/aquaxg>





NEW POWER PACKS

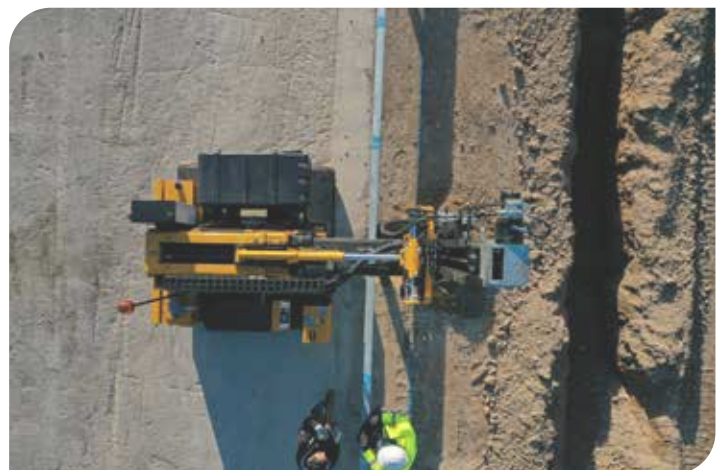
New Stage 5 / Tier 4 final compliant engines, watercooled and equipped with a diesel particulate filter



PLATES - Plates of super resistant material with post profiles milling



Technical features	
Model	HD45°
Hammer power	550 Joules
Strokes per minute	540/1670
Electrical System	12 Volt
YANMAR diesel engine	4TNV88C
Power (@ 3000 Rpm)	35,4 Kw (47,5 Hp)
Max operating pressure	20 Mpa
Oil flow	95 Dm ³ /min
Hydraulic tank capacity	160 Dm ³
Diesel tank capacity	60 Dm ³
DFP Filter	Standard
Emission Legislation (*)	Stage 5 / Tier 4 final
Color display with physical keys	4,3"
Total weight	5370 Kg
The manufacturer reserves the right to modify the technical features without prior notice. Photos may show non-standard accessories.	



(*) also available with Stage 3A compliant engines